

Mountain Empire Trail Association

The Patagonia Train Track Trail (PTTT) was named by local elementary school students and serves as an outdoor classroom for local school teachers. The PTTT is the first segment of a trail linking Patagonia and Sonoita along the old railroad bed. META is also working on other trail segments with our partner organizations. We welcome your help, suggestions and ideas. Please contact us.



The mission of META is to create a local trail network to benefit the health and vitality of our community.

P.O. Box 46, Patagonia, AZ 85624

Your donations to META are tax-deductible.



Old Southern Pacific Railroad Depot now Patagonia Town Hall

Mountain Empire Trail Association

CONTACT PERSON: Zay Hartigan
zay@zaycom.com

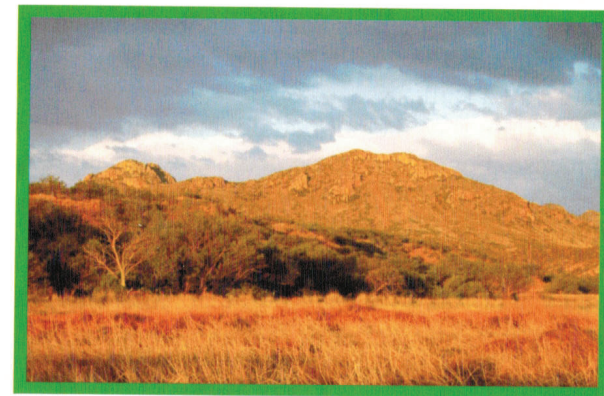
Partners: The Den/Patagonia High School; Patagonia Regional Community Foundation, The Nature Conservancy; Native Seeds/Search; Mariposa Community Health Center; Town of Patagonia; Santa Cruz County; Community Coalition of Eastern Santa Cruz County; Senior Citizens of Patagonia

This brochure was produced by Patagonia High School students at the Teen Enterprise Café's Graphic Design Studio created and managed by the Community Coalition of Eastern Santa Cruz County. This brochure was funded by the National Park Service—Rivers, Trails and Conservation Assistance Program.



Mountain Empire Trail Association

Patagonia Train Track Trail



Patagonia Train Track Trail

THE TRAIL

The Patagonia Train Track Trail (PTTT) begins near the Railroad Depot/Town Hall. It follows State Highway 82 crossing the Sonoita Creek bridge before connecting with the old Railroad bed. Follow signs and please close the gates.

The Patagonia area is renowned for its natural history and diversity. Many different species of birds, animals and plants are found in this area. Sonoita Creek flows through Patagonia and The Nature Conservancy's Patagonia-Sonoita Creek Preserve before reaching Patagonia lake State Park. The magnificent cottonwood trees you see on the trail are home to dozens of species of birds, some unique to this area. More information can be found at the Patagonia Visitor's Center in Mariposa Books and More.

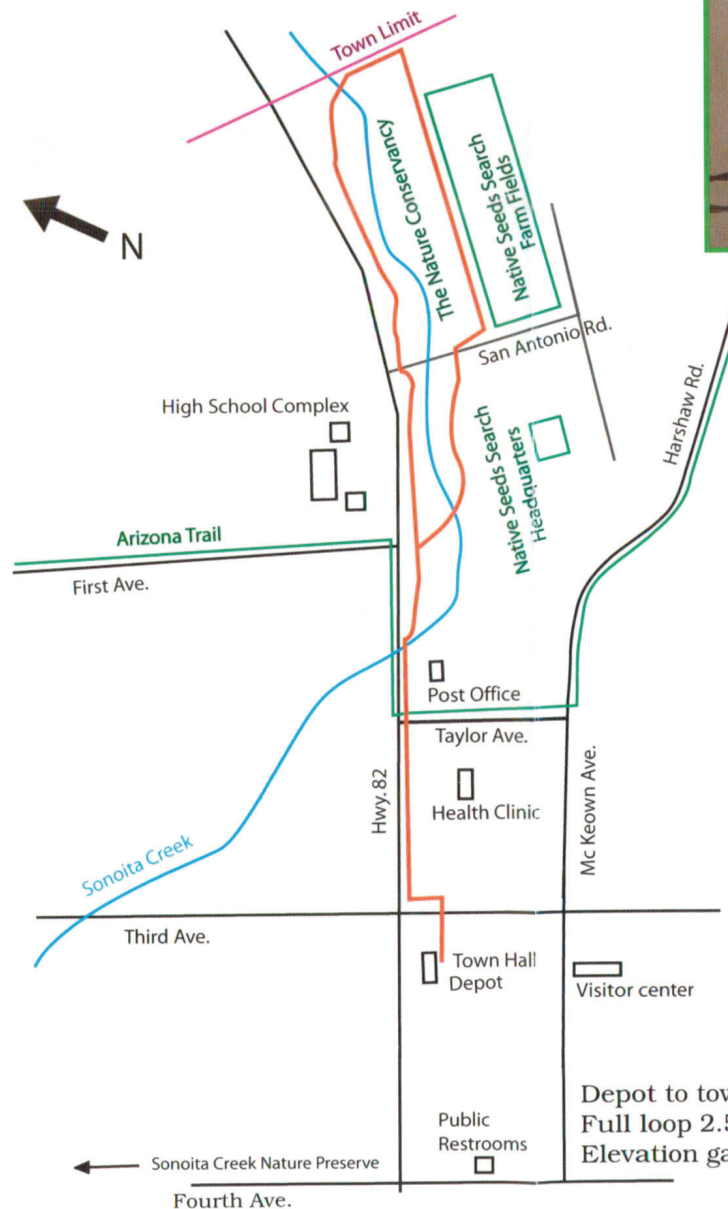
HISTORY

The New Mexico and Arizona Railroad ran to Patagonia from 1882 until 1962. It was built by the Santa Fe Railroad and ran from Benson via Elgin, Sonoita and Patagonia to Nogales and on to Guaymas on the Sea of Cortez. It was the third transcontinental railroad built in the US.

In 1929 a major storm washed out 4000 feet of rails. It was not rebuilt and tracks ended at Flux Canyon west of town. A turntable to turn the steam engines was installed opposite the present Wagon Wheel Saloon. The remaining portion from Patagonia to Benson was abandoned in 1962 due to lack of business.

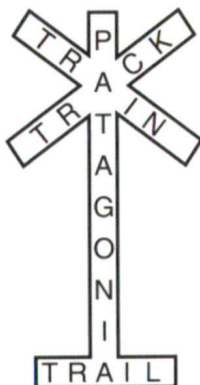
In 1897 the Southern Pacific Railroad leased and later bought the Railroad. They built the Depot that today serves as Patagonia's Town Hall.

The impact of the railroad on the communities it served was immense. For the first time people, information, and freight could cheaply and rapidly move across the country. Because of reduced transportation costs both the cattle and the mining industries found that at last they could turn a reasonable profit. The town of Patagonia owes its existence to them and especially the railroad. The beautiful park is a legacy of the railroad.



We ask you to observe the following rules of the Trail:

- Please Stay On Trail
- No smoking
- Good thoughts only!
- Close gates
- Pack In/Pack out



Depot to town limit 1.1 miles
Full loop 2.5 miles
Elevation gain 50 feet